

# HOW TO GET AND USE AN UNLOCK CODE

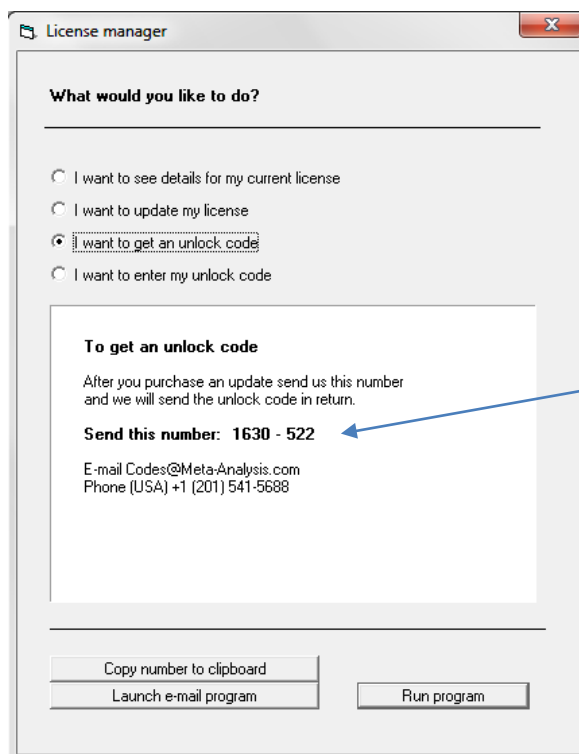
## Install the program

### Download CMA

1. Download the program
2. Save the installation to your computer
3. Run the installation

### Get an unlock code

1. Start the program
2. The program will show the screen in Figure 1
3. Click "I want to get an unlock code"
4. Click "Copy number to clipboard"
5. Paste the number (see below) into your e-mail program and send to
6. [Codes@Meta-Analysis.com](mailto:Codes@Meta-Analysis.com)
7. In the e-mail, provide information about your license
8. Close the program



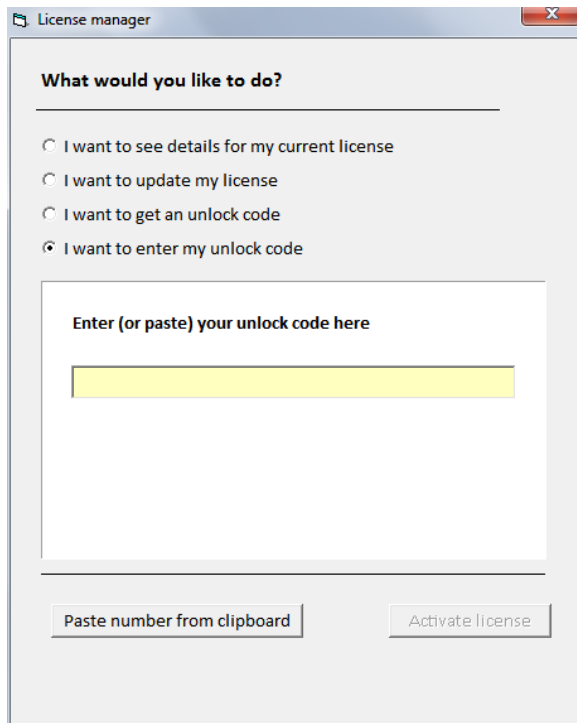
In this example the number is 1630-522, but your number will be different

The code is different for every computer, so please send the code from the computer that you will use for the course.

Figure 1 - Obtain an unlock code

## Enter your unlock code

1. We will send an unlock code by return e-mail
2. When you get this code, copy it to your Windows clipboard (CTRL-C)
3. Run the program
4. Click "I want to enter my unlock code" (Figure 2)
5. Click "Paste number from clipboard"
6. Click [Activate license]



The screenshot shows a window titled "License manager" with a close button in the top right corner. The main content area is titled "What would you like to do?" and contains four radio button options:

- I want to see details for my current license
- I want to update my license
- I want to get an unlock code
- I want to enter my unlock code

Below the options is a text input field with the placeholder text "Enter (or paste) your unlock code here". The input field is currently empty and highlighted in yellow. At the bottom of the dialog, there are two buttons: "Paste number from clipboard" and "Activate license".

Figure 2 - Enter the unlock code

## Notes

- Running the installation will install Version 3 of the program.
- If Version 2 is on the same computer it will not be affected.
- If you have Version 3 on the computer it will be updated.
- If you have any questions, please send an e-mail or phone +1 (201) 541-5688